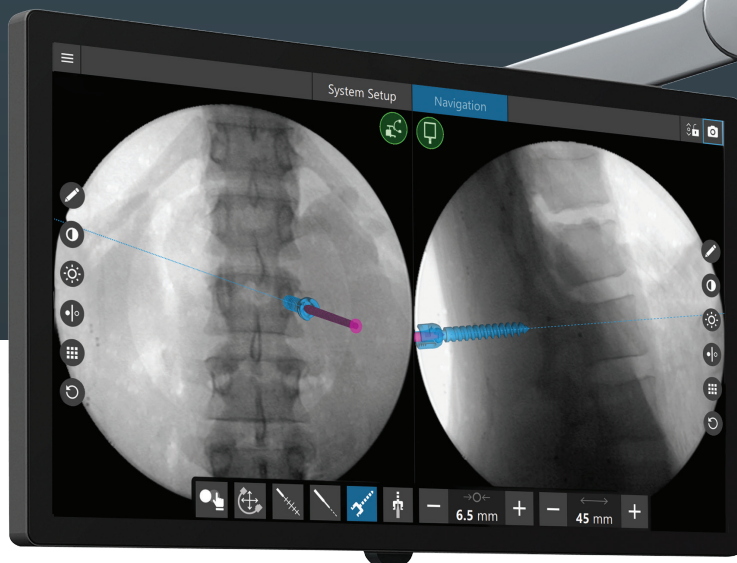


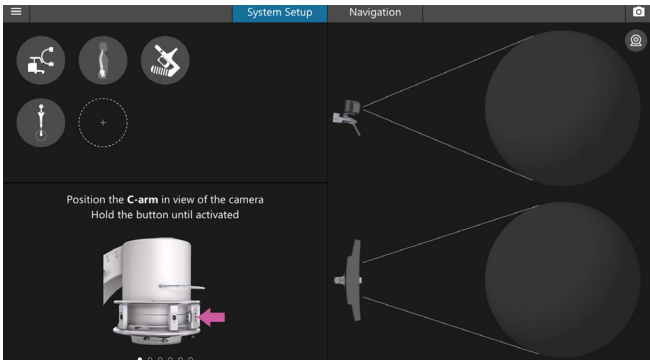
SpineMap Go[®]

Overview quick guide



Step 1

Start the SpineMap Go software



Step 2

Attach both the Tracker Adapter and C-arm Tracker to the Image Intensifier

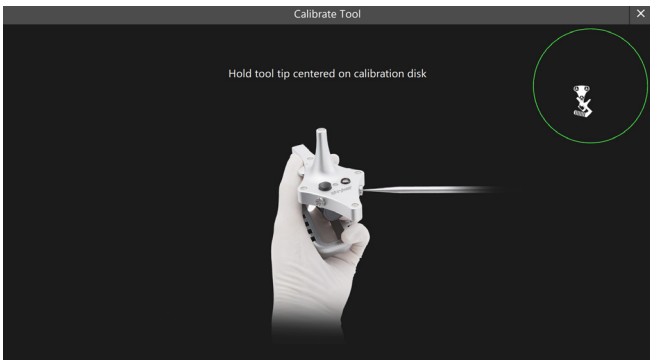
- Insert the battery into the C-arm Tracker



Step 3

Turn on all calibration devices and instruments

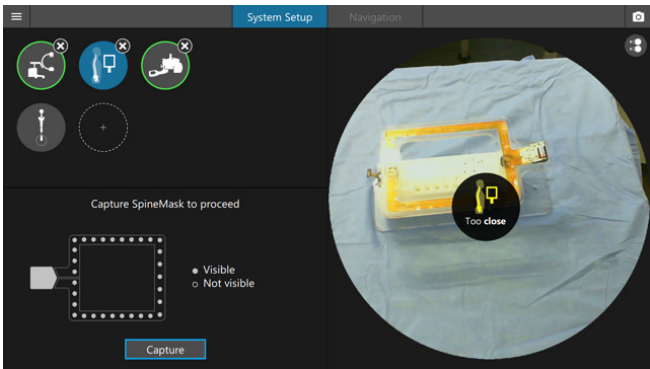
- One Calibration Device must be turned on (PCD or VCD)
- One instrument must be turned on
- Patient tracker must also be turned on before proceeding to navigation



Step 4

To move forward, the system must also see the C-arm via the C-arm Tracker and the patient tracker

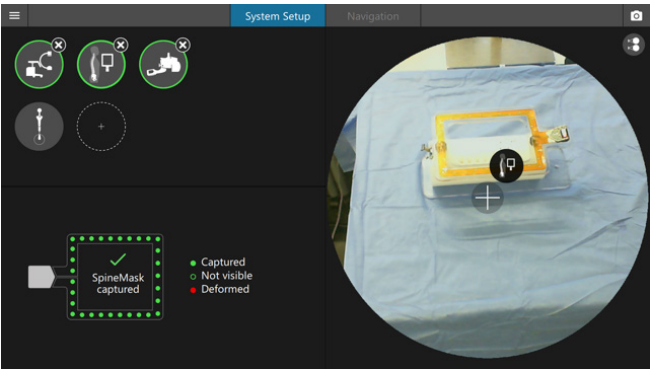
- Ensure the C-arm Tracker is turned on by pushing the middle button for 3 seconds
- Fixate the patient tracker in a position between the surgical working area and the navigation cart
- Ensure that the patient tracker is turned on and visible to the camera



Step 5

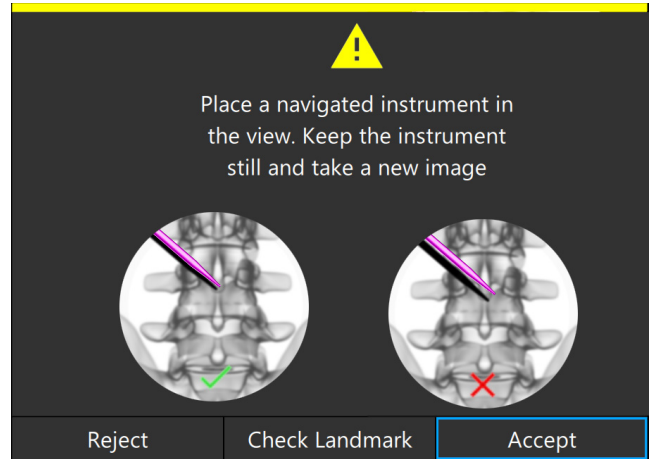
When the camera can see the C-arm Tracker and the patient tracker at the same time, you can now acquire your first image

- If SpineMap Go is in Automatic Image Acquisition mode, when the RT takes the first shot, the image will automatically come over to the navigation system
- If SpineMap Go is in Manual Image Acquisition mode, the navigation operator needs to select the “manual hand” icon to pull over the desired image that is displayed on the C-arm monitor



Step 6

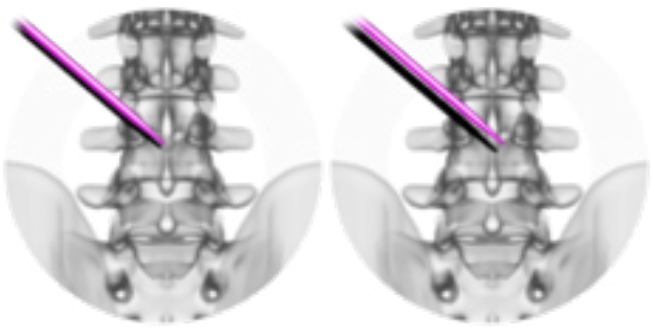
- After image acquisition, it is required for the user to ensure accuracy by placing a navigated tool on a known anatomical landmark or proceeding with a shadow check if known anatomical landmarks are not accessible (MIS procedures)



Step 7

To proceed with a shadow check

- Place a navigated instrument in the C-arm field of view during image acquisition
- If the augmented image of the tool eclipses the shadow shown from the imaging device, accuracy can be confirmed
- If the shadow of the instrument does not line up with the augmented tool, reject accuracy



Spine

This document is intended solely for the use of healthcare professionals. A surgeon must always rely on his or her own professional clinical judgment when deciding whether to use a particular product when treating a particular patient. We do not dispense medical advice and recommend that surgeons be trained in the use of any particular product before using it in surgery.

The information presented is intended to demonstrate Stryker's products. A surgeon must always refer to the package insert, product label and/or instructions for use, including the instructions for cleaning and sterilization (if applicable), before using any of Stryker's products. Products may not be available in all markets because product availability is subject to the regulatory and/or medical practices in individual markets. Please contact your representative if you have questions about the availability of Stryker's products in your area.

Stryker or its affiliated entities own, use, or have applied for the following trademarks or service marks: SpineMap Go, SpineMask, Stryker. All other trademarks are trademarks of their respective owners or holders.

The absence of a product, feature, or service name, or logo from this list does not constitute a waiver of Stryker's trademark or other intellectual property rights concerning that name or logo.

Stryker
600 Hope Parkway SE
Leesburg, VA 20175 USA
t: 571 919 2000
toll free: 866 526 4171

stryker.com